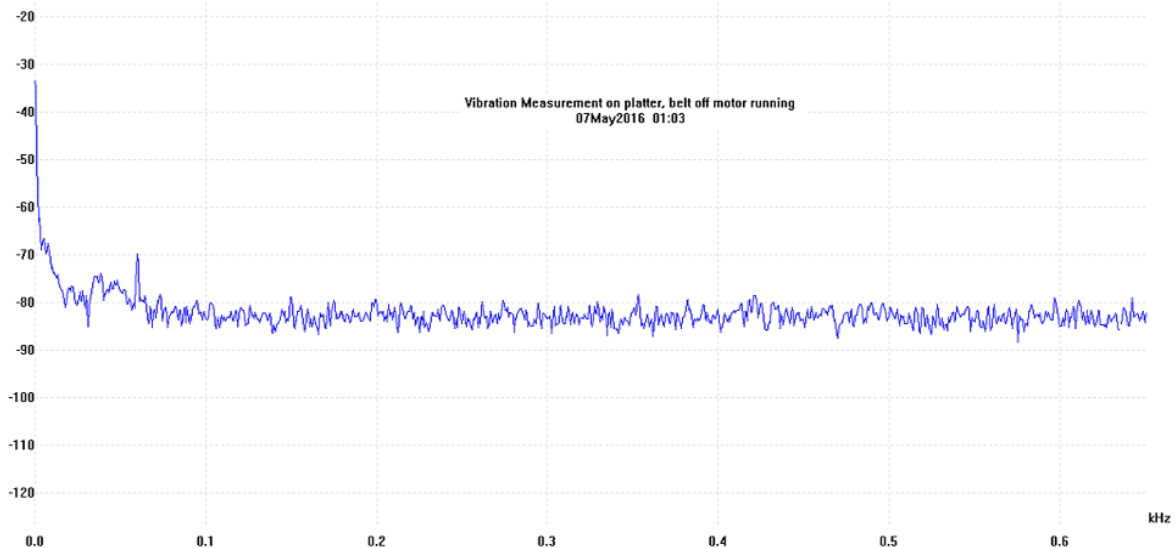
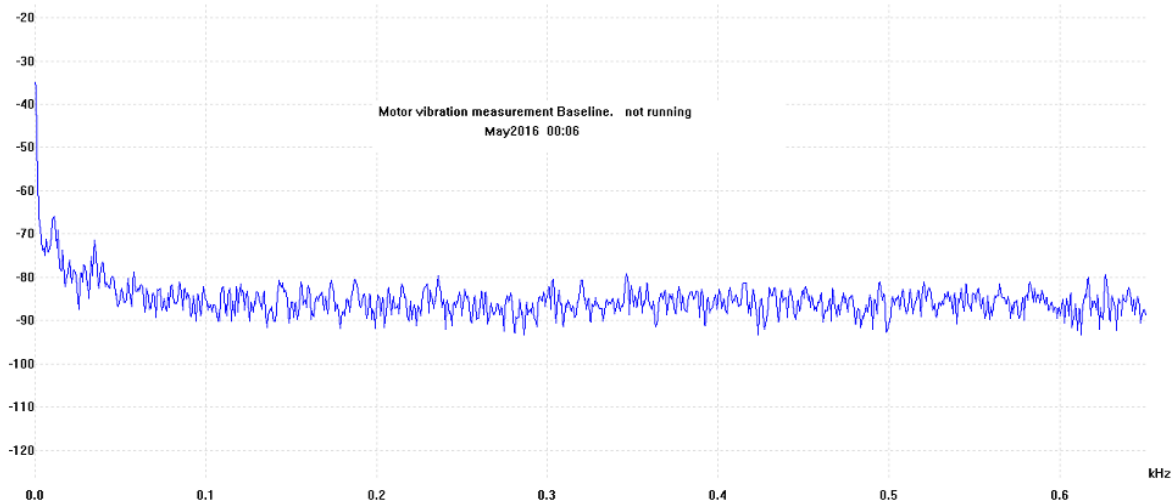


## Forum Topic: Accelerometer Results of the Classic Turntable

Postby Harry » Fri May 06, 2016 3:30 pm

These views are the graph results of accelerometer testing of the Classic turntable with motor off (showing background noise) and motor on belt off showing noise spectrum with motor running. As you see we average almost 70 db down with a large percentage being 80 db down and always a minimum of at least 60 db down.



Postby Orchids1 » Sat May 07, 2016 8:39 am

Harry, Please see my question on this topic in the Support Forum. Rich

Postby Harry » Sat May 07, 2016 12:13 pm

The test results show the inherent low noise of the Classic system, not as low as the HR-X/Aries/Prime with the separate motor, but way below anything on a record and most phono sections.

Introducing the belt into the equation changes everything as things move (due to the belt not being 100% perfect) that disturb the accelerometer so the readings are not as clear but we will be doing that and we will be showing accelerometer tests on tonearms. I can tell you from the initial tests the 3D printed arm is significantly lower, in a measurable way, than any metal arm made.

With the introduction of chief engineer Mike Bettinger to the VPI team there will be a lot more to come. We will try to measure what we hear and see if we can find a correlation.

Best of all we will publish the incredibly low numbers of the Direct Drive and explain why it is the best table in the world.

HW

Postby rif » Sat May 07, 2016 2:35 pm

Can you superimpose both graphs in different colors on the same chart to facilitate comparison?

Postby Harry » Sun May 08, 2016 12:58 pm

I will have that done in the near future.

HW

Postby MOON » Mon Aug 13, 2018 5:59 pm

Harry , you mentioned the Levinson turntable drive system Mat is working on. Is that the new drive system for VPI tables ? I remember Mat talking about a joint venture drive system for VPI tables.

If this is it, do you or Mat have any idea when it would be available for us? Also, it would be great if you gave the option of a black or silver face plate.

Postby Harry » Tue Sep 04, 2018 5:25 pm

The Mark Levinson drive system is a joint venture putting the ADS drive into the motor assembly using advanced miniaturization. It is so good the table has won awards all over the world. That will eventually find its way into other products.

HW